

# Cadimage Legends for the ArchiCAD MasterTemplate

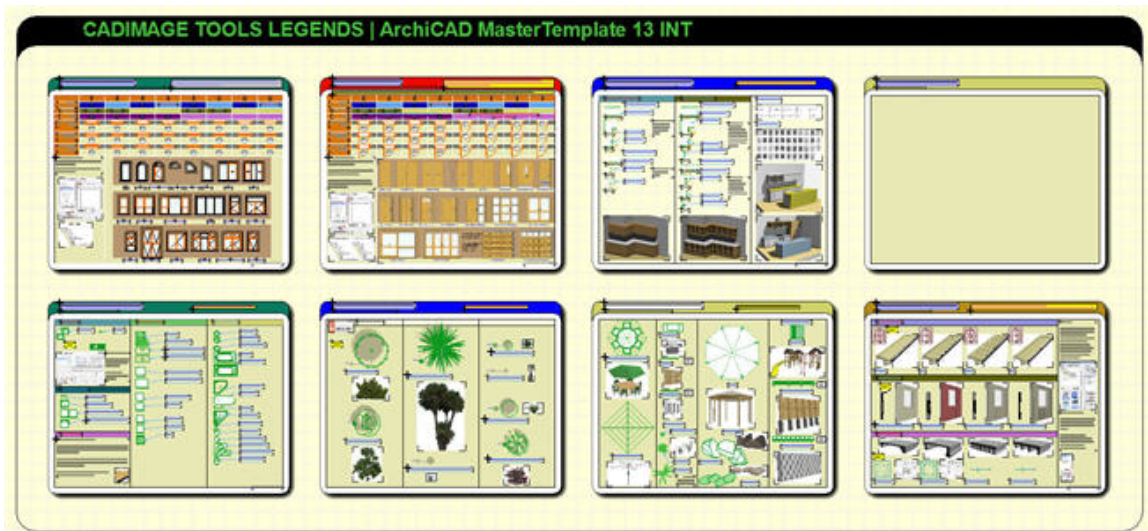
January 19, 2010



**Interactive Legends  
for MasterTemplate**

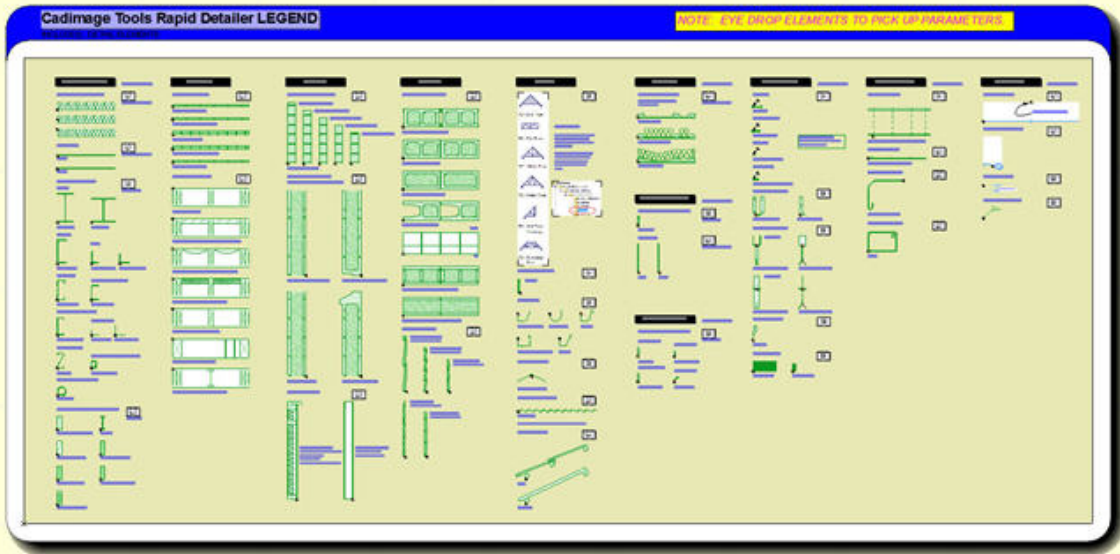
The Cadimage Legends add-on for the ArchiCAD MasterTemplate provides quick access to a kit of parts for many of the Cadimage Tools products. It is designed to be easily added to your customized office MasterTemplate as two separate Hotlinked Modules, one for 3D components and one for Rapid Detailer 2D elements.

Cadimage Legends is supplied as a PLN file with three stories. The lowest floor contains the legend groupings for Window Builder and Door Builder, Cabinet Builder, Design Suite, Landscaping Tools, Landscaping Extras, and Accessory Tools. There is also a blank legend frame set up for you to add your own favorite elements.



The story above that in the PLN file is used as a spacer, since some of the roof accessories show one story up.

The top story is used for the Rapid Detailer Legend, which is at a larger scale:



In addition to the Legends themselves, there are Default presets for Door and Window Builder to speed up changing from one shape to another, and an optional Work Environment scheme and overall profile.

# TABLE OF CONTENTS

## DOWNLOAD INSTRUCTIONS

### INITIAL SETUP AND CLEANUP

- FOR NEW AMT USERS ONLY: MASTERTEMPLATE + CADIMAGE TPL
- HOTLINKING THE CADIMAGE LEGENDS INTO MASTERTEMPLATE
- CREATING VIEWS OF THE CADIMAGE LEGENDS
- OPTIONAL: ZOOMED VIEWS & SAVED ZOOMS FOR LEGEND GROUPS
- PLACING THE RAPID DETAILER LEGEND INTO A WORKSHEET
- SAVE YOUR MASTERTEMPLATE TPL FILE

### USE OF THE CADIMAGE LEGENDS

- SHAPE PRESETS
- EXTERIOR AND INTERIOR DOORS
- RAPID DETAILER

### AMT / CADIMAGE WORK ENVIRONMENT

### SUPPORT

## DOWNLOAD INSTRUCTIONS

The Cadimage Legends are supplied as a download from the ArchiCAD MasterTemplate website (<http://www.archicadtemplate.com>). Click the DOWNLOAD link in the navigation bar, and Login with the email address and password registered during your purchase.

On the Download page, there are links for each of your licensed MasterTemplate products. Download the Cadimage Legends zip file and extract the contents. You'll see there are three items:

1. AMT CADIMAGE LEGENDS USA/INT 13.pln
2. A folder called "AMT CADIMAGE Work Environment"
3. A folder called "Put contents into - ArchiCAD 13 - Cadimage Tools Extras - Defaults"

Move the Cadimage Legends PLN file and the Work Environment folder into your main MasterTemplate folder, alongside the MasterTemplate.TPL file. You may use ArchiCAD's Options menu > Work Environment to Import the AMT CADIMAGE Work Environment if you wish. For more information on installing an AMT Work Environment, see the section near the end.

Open up the folder called "Put contents into - ArchiCAD 13 - Cadimage Tools Extras - Defaults" and select the AMT folder from inside it, and drag or copy/paste it into your ArchiCAD 13 / Cadimage Tools Extras / Defaults folder. This is the recommended location, however, it actually can go anywhere you wish. You'll access it "on the fly" by browsing for a shape preset file within this folder while in the Door Builder or Window Builder settings dialog box.

If you are just getting started with AMT and purchased the Cadimage Legends along with a new license of AMT, please be sure to download the combined AMT with Cadimage TPL file (available from the download page). This simplifies initial setup, since the Cadimage Legends are already integrated into this copy of MasterTemplate. You still need to download the main Cadimage Legends zip file (as above), but will not have to Hotlink it into the template or create Views, since that has already been done. You'll follow the instructions for initial setup of the Cadimage Legends PLN file (below) but then be able to jump straight to the section on the **USE OF THE CADIMAGE LEGENDS.**

## INITIAL SETUP AND CLEANUP

Start ArchiCAD 13, and Open the Cadimage Legends PLN file. If necessary, help Library Manager find the MasterTemplate Library, as well as your Cadimage Libraries if they are not located within the standard ArchiCAD 13 Library folder.

If you haven't purchased all of the Cadimage Tools, you will have some missing library parts. You will need to clean this up (for detailed steps, see the next two paragraphs) by deleting from the Cadimage Legend PLN file the Legend groups or elements that are unavailable - these will be shown with "dots" on the floor plan.

In the View Map double-click the CADIMAGE TOOLS LEGENDS | ALL view. You'll see all the 3D components in the Legends, arranged in groups. Delete any elements that you do not own that are shown as "missing dots". (If you later buy additional Cadimage Tools, you can copy these back again from the original Cadimage Legends PLN included in your downloaded zip archive file.) After deleting the missing objects for any Tool that you do not own (for example, Cabinet Builder), you can leave the Legend group frame if you wish, or delete it.

In the View Map, double-click the RAPID DETAILER | ALL view. If you do not own Rapid Detailer, you'll see lots of dots indicating missing library parts. In that case, select everything in this view and delete it.

Return to the CADIMAGE TOOLS LEGENDS | ALL view, then Save the PLN file. You may close this file when you follow the next steps (below), since your Cadimage Legends PLN file is fully ready for hotlinking into MasterTemplate.

- **FOR NEW AMT USERS ONLY: MASTERTEMPLATE + CADIMAGE TPL**

If you haven't customized MasterTemplate yet, you can work with a version of MasterTemplate that has the Cadimage Legends already integrated (MasterTemplate 13 USA/INT TEMPLATE with CADIMAGE.tpl). Download that file from our website.

During the standard installation of MasterTemplate, all Hotlinks need to be checked, relinked and updated. Follow the directions in the QuickStart Guide for opening Hotlink Manager.

In addition to the standard Hotlinks (AMT Legends, AMT Office Favorites and AMT Project Favorites) you'll see two references to AMT CADIMAGE Legends in the upper section of the Hotlink Manager. While you're updating all the standard Hotlinks (using the Relink...from File popup), you'll need to do this for the Cadimage Legends as well. Note there is only one reference in the Hotlink Sources panel, since both Cadimage Legends come from the same PLN file.

Once you have updated the Hotlinks, you can skip all the rest of the installation and configuration steps in this guide, since everything has already been set up in the integrated MasterTemplate file you downloaded. Of course, we suggest you follow the rest of the QuickStart Guide and consult the main MasterTemplate Manual for general guidance. When you are ready, skip to the section in this document for **USE OF THE CADIMAGE LEGENDS**.

- **HOTLINKING THE CADIMAGE LEGENDS INTO MASTERTEMPLATE**

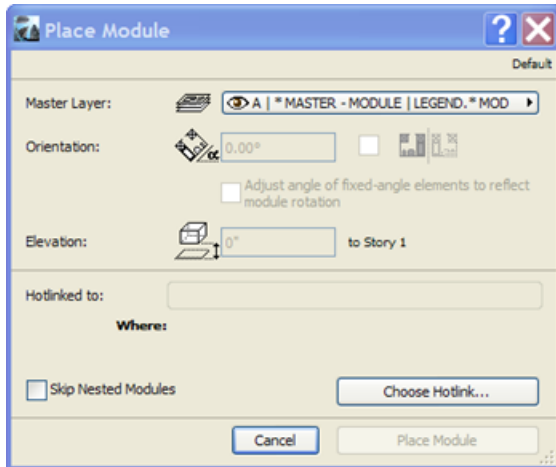
If you are an existing user of MasterTemplate, you'll need to open up your customized office template and modify it to integrate the Cadimage Legends. It is a good idea to backup your current office template file before you make any significant modification. We recommend duplicating the TPL file (you may simply Copy, then Paste) and changing the name of the duplicate (to indicate the date or add "before Cadimage" to the name) rather than the name of the active TPL file. This allows all bookmarks or references to the TPL in popups to remain intact.

Inside ArchiCAD, select File menu > Open > Open..., and choose from the "Files of type:" popup "ArchiCAD Project Template (\*.tpl)". Browse and select your custom MasterTemplate TPL file, and click Open.

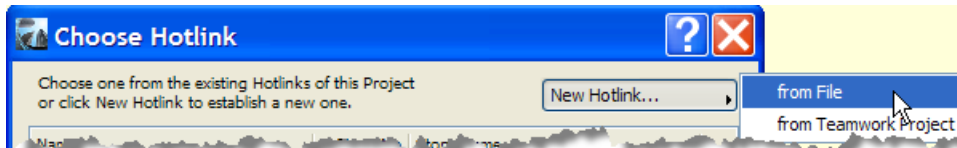
You'll need to go to the right location in the TPL file to place the Hotlink for the Cadimage Legends. In the View Map, expand the INTERACTIVE LEGENDS (FAVORITES) > LEGENDS | PLAN folder, and double-click LEGEND 3D | ALL.

**NOTE:** It is important you use this View from the LEGENDS | PLAN folder, which takes you to a part of the floor plan, rather than the similar view in the LEGENDS | WORKSHEET folder (since that brings up a Worksheet with the Plan view shown as a Virtual Trace reference).

Open the File menu > External Content > Place Hotlinked Module... Check and make sure the Master Layer is set to A | \* MASTER - MODULE | LEGEND.\*MOD, then click the button to Choose Hotlink...

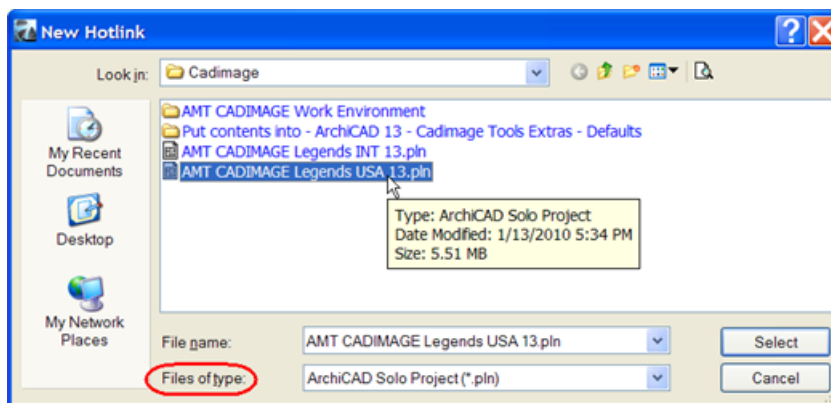


In the Choose Hotlink dialog box, choose New Hotlink... > from File:



then browse and select the Cadimage Legends PLN file.

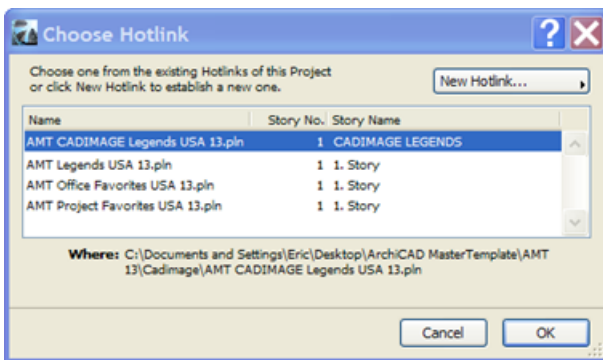
**TIP:** In the New Hotlink dialog, you may need to switch the "Files of type:" popup to "ArchiCAD Solo Project (\*.pln)" if it isn't set to that already:



In the Choose Story dialog box, click the radio box for Individually Linked Stories, then pick the CADIMAGE LEGENDS story and click OK.

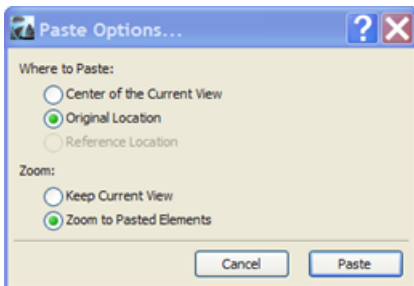


Returning to the Choose Hotlink dialog, select the Cadimage Legends file, and click OK:



Next, in the Place Module dialog, click Place Module.

If the Paste Options... dialog appears, choose "Original Location" and "Zoom to Pasted Elements", then click the Paste button:



Click outside the marquee to complete the placement of the Cadimage Legends Hotlinked Module. It should appear directly below the main Interactive Legends.

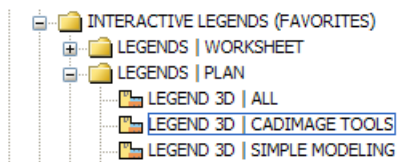


## • CREATING VIEWS OF THE CADIMAGE LEGENDS

In the Navigator View Map, right-click on the LEGENDS | PLAN folder, and select Save Current View. In the Save View dialog:

1. Change the ID popup to None
2. Change the Name popup to Custom, then type in LEGEND 3D | CADIMAGE TOOLS
3. Make sure the "Ignore Zoom when opening this view" checkbox is NOT checked
4. Click the Create button

The new View will appear as the first item in the list for the LEGENDS | PLAN folder, and you may leave it there or reposition it below LEGEND 3D | ALL.



Click the minus sign to collapse up the LEGENDS | PLAN folder list, then click the plus sign for the LEGENDS | WORKSHEET folder (right above it) to expand that folder list. Double-click the LEGEND 3D | ALL view to show the Interactive Legends from their special worksheet as a Virtual Trace reference. Zoom out a bit, and you'll see the Cadimage Legends sitting right below the main Interactive Legends.

Use the Zoom In button and carefully zoom in closely around the Cadimage Tools Legends. Then right-click on the LEGENDS | WORKSHEET folder, and choose Save Current View.

1. Name this view LEGEND CT | CADIMAGE ALL
2. Make sure the "Ignore Zoom when opening this view" checkbox is NOT checked
3. Click the Create button

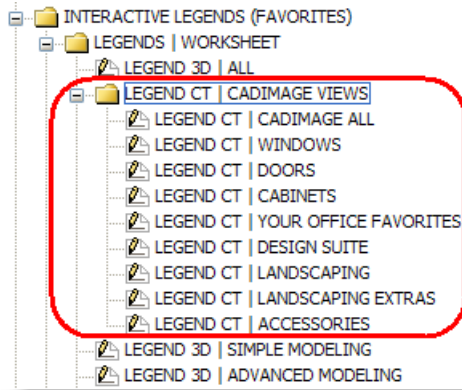
The new View will show up at the top of the LEGENDS | WORKSHEET folder list; you may leave it there or reposition it wherever you wish in relation to the other LEGEND views in that folder.

- **OPTIONAL: ZOOMED VIEWS & SAVED ZOOMS FOR LEGEND GROUPS**

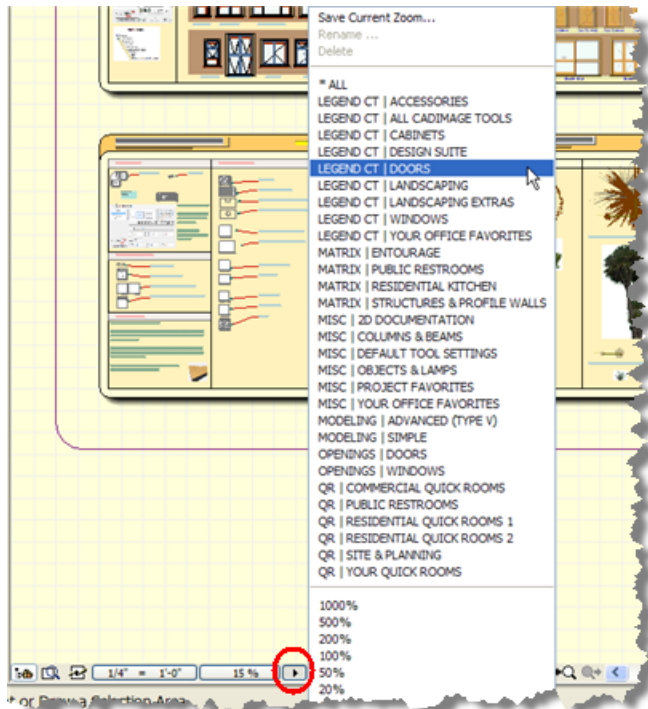
You may create zoomed views for each group of the Cadimage Legends inside a subfolder.

Right-click on the LEGENDS | WORKSHEET folder, and choose New Folder. Name it LEGEND CT | CADIMAGE VIEWS, and click Create. Carefully zoom in on each Legend group, then right-click on the LEGEND CT | CADIMAGE VIEWS folder and select Save Current View. Name the view appropriately, then proceed to the next group. When you are done, reorganize the Views within that subfolder as desired.

Here is what we have set up in the MasterTemplate file that integrates the Cadimage Legends:



If you wish, set up Saved Zooms in the lower left navigation area. After zooming into each View of a Legend grouping, press down on the popup triangle next to the Zoom percent in the bottom left of the Worksheet window, and select Save Current Zoom...



**TIP:** If you name these with a consistent prefix (e.g. "LEGEND CT | ") they will group together alphabetically.

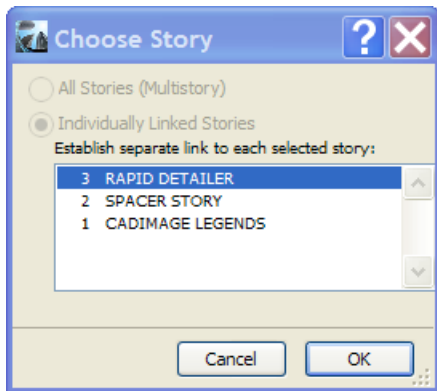
## • PLACING THE RAPID DETAILER LEGEND INTO A WORKSHEET

If you own Rapid Detailer, we suggest you place a hotlink for its Legend (which is supplied in the Cadimage Legends PLN) into a new worksheet for convenient access. (If you don't own Rapid Detailer, you may skip to the end of this section where you will save your reworked MasterTemplate TPL.)

Switch to the Project Map, and right-click on the Worksheets folder and select New Independent Worksheet. Name it "CADIMAGE TOOLS | RAPID DETAILER", and if you wish, give it a Reference ID such as LG-06.

Once the blank Worksheet appears, click the scale button in the lower left of the window to set the scale to 1" = 1'-0" (Imperial) or 1:10 (Metric). You may also use the Quick Options palette to set the scale.

Go to the File menu > External Content > Place Hotlinked Module... and repeat the process you used to select a new hotlink referencing the Cadimage Legends PLN file. However, in the Choose Story dialog, this time select the RAPID DETAILER story:



Returning to the Choose Hotlink dialog, highlight the RAPID DETAILER hotlink, and click OK. In the Place Module dialog, simply click Place Module. If the Paste Options... dialog appears, choose "Original Location" and "Zoom to Pasted Elements", then click the Paste button.

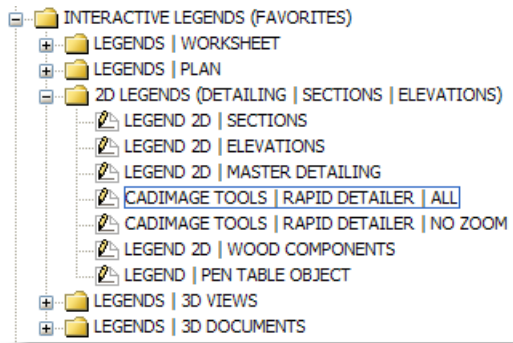
Click outside the marquee to finish placing the Rapid Detailer Legend into the Worksheet.

The next step is to create Views for the Rapid Detailer Legend. In the View Map, expand the INTERACTIVE LEGENDS (FAVORITES) > 2D LEGENDS (DETAILING | SECTIONS | ELEVATIONS) subfolder. Zoom in tight to the Rapid Detailer Legend, if you haven't already. Right-click the subfolder, and select Save Current View.

Name the View CADIMAGE TOOLS | RAPID DETAILER | ALL. Double-check to make sure that the Layer Combination is set to \* INTERACTIVE LEGENDS and that the "Ignore zoom when opening this view" checkbox is NOT set, then click Create.

We suggest you create a second View that has the Ignore Zoom checkbox checked, so that when appropriate you can easily return to this worksheet in the same location you last viewed. Simply repeat the Save Current View process, naming the View CADIMAGE TOOLS | RAPID DETAILER | NO ZOOM, while checking the Ignore Zoom box.

Here is a screenshot of how we have set up these Views inside the 2D LEGENDS subfolder:



- **SAVE YOUR MASTERTEMPLATE TPL FILE**

Save the TPL file, since you're done with the process of adding in the Cadimage Legends into your custom MasterTemplate.

**TIP:** The last state of the TPL file is remembered when you start a new project. To simplify the environment when you start a project, we suggest that before you Save the TPL, you close down most of the View Map folders except MODEL / DESIGN VIEWS and the primary FLOOR PLANS folder. Also, close all windows except the PRELIMINARY DESIGN floor plan View and the INTERACTIVE LEGEND WORKSHEET.

You may now close your MasterTemplate TPL file.

- If you need to rework or tweak your template later, use ArchiCAD's File menu > Open...>Open... command and switch the file-type popup to TPL, then select your template file. Make the desired changes, Save and close the TPL file.
- To start a new project, use the File menu > New... command and select Use a Template. The popup menu for template files should still be set on your custom MasterTemplate TPL file.

## USE OF THE CADIMAGE LEGENDS

While you are working on a project, you may use the eyedropper with the Cadimage Legends in the same way as the standard Interactive Legends. This document describes suggested ways for AMT users to interact with Cadimage Tools. For complete information on usage, please refer to the documentation supplied by Cadimage Tools with your purchase of their products.

As with AMT's standard Legends, the ID of each element has been set up with a prefixed letter Z (e.g. doors have ID's of ZD01, ZD02, etc.). This prevents them from being listed in the standard AMT schedules, since these schedules have a Criteria based in part on the ID. At any time after placing an element, remove the Z and change the ID to D01 or similar; this will allow these doors, windows and other objects to be included in AMT schedules.

Except for Rapid Detailer, the rest of the Cadimage Legends are accessed through the special Legends Worksheet activated from the PRELIMINARY DESIGN View in the MODEL / DESIGN VIEWS folder.

You may zoom in manually to any part of the Cadimage Legends in that worksheet. You may also use Saved Zooms (in the lower left navigation area) or zoomed Views in the View Map to quickly navigate to legend groupings. (Setup of these zooms was described in the OPTIONAL section above. If you didn't create them during the initial setup, you may do so at a later date by reopening the TPL file, adding them, then resaving the TPL.)

- **SHAPE PRESETS**

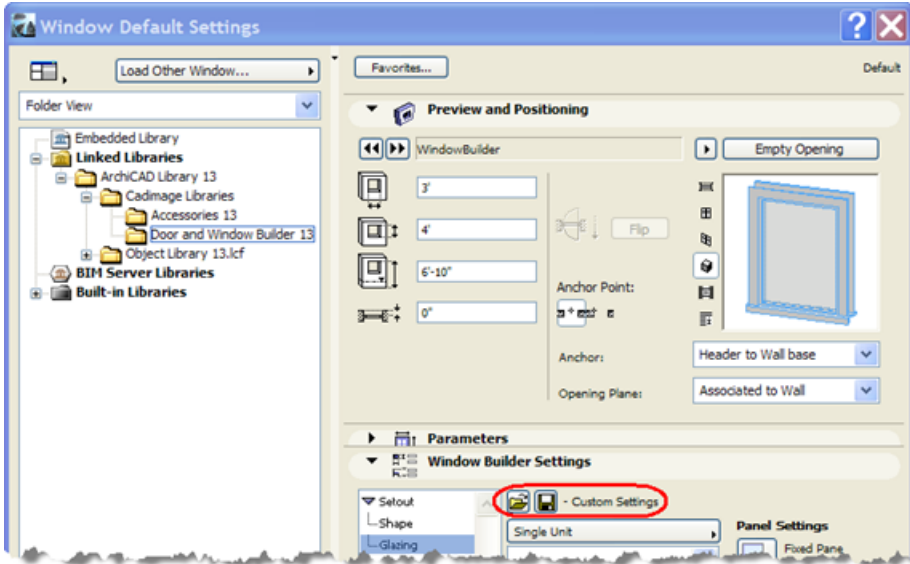
Cadimage Tools has developed a technology within many of their products to enable Presets to be stored and retrieved. These are similar to ArchiCAD Favorites, except that they refer to specific parts of the object styling rather than the entire element's settings. For example, there are separate presets for door panels and for door frames.

Many presets are supplied by Cadimage Tools and installed in the ArchiCAD 13 / Cadimage Tools Extras / Defaults folder. The Cadimage Legends provides extra presets specifically for AMT users as part of the downloaded Cadimage Legends zip archive. Early in these installation instructions, you placed this AMT folder alongside the other presets inside the Defaults folder.

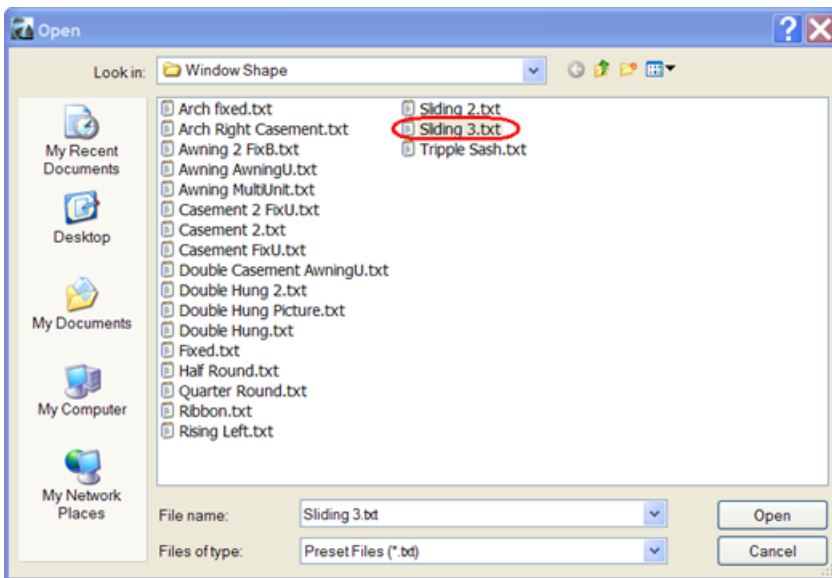
When you pick up an overall configuration for a window by eye-dropping it in the Legends, you get the styling for the frame, casing and wall inset. As with the standard Legends, all of these windows are initially set for a single fixed unit.

However, unlike standard ArchiCAD Library windows, Window Builder is a single very configurable library part. (Door Builder is similar.) This means that in order to switch to an operable slider, casement, awning or combination assembly, you don't switch to a different library part - you interact with Window Builder's dialog box to add additional units and define their operation. You may use these standard Window Builder techniques, or take advantage of shape presets supplied in the ArchiCAD 13 / Cadimage Tools Extras / Defaults / AMT folder.

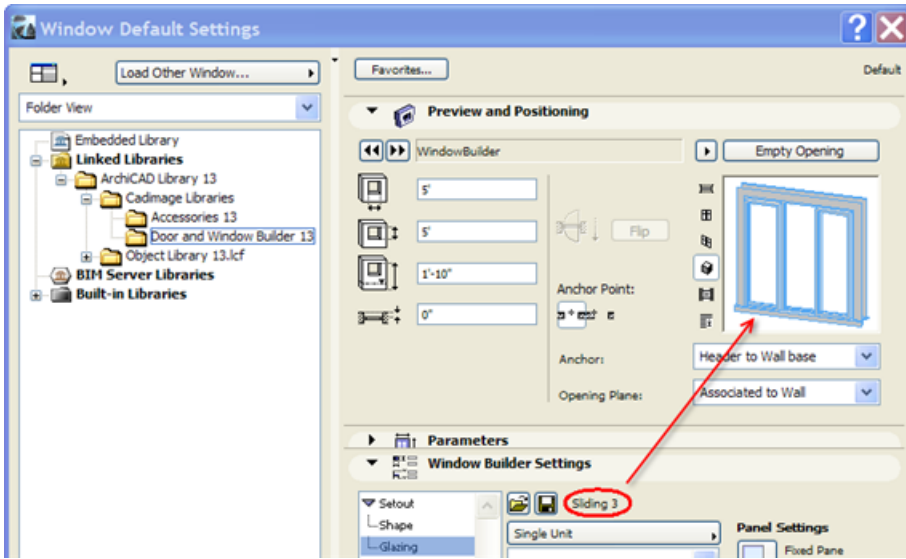
Click the Setout category in the Window Builder Settings, then the Glazing option. In the Custom Settings area use the Open button (the one with the folder falling open; the tooltip says "Browse to Select a Preset"):



Browse for a shape configuration inside the Defaults / AMT folder (in this case inside the Exterior Doors Windows / Window Shape subfolder):



This will result in the following shape for the window, as shown in the settings dialog preview:



Shape presets are available for both Windows and Doors, and other presets are supplied for certain hardware options. Previews of all the window and door shape presets along with their names are shown as part of each Legend group, along with a visual reminder of this technique and the location of the AMT preset folder:

**Cadimage Tools WINDOW LEGEND**

INCLUDES: VARIATIONS BASED ON CASING, FRAME STYLE, SILL & INSERTION TYPE

NOTE: EYE DROP WINDOWS TO PICK UP CASING, FRAME, SILL & CONSTRUCTION PARAMETERS. ONCE PARAMETERS ARE ABSORBED, USE CADIMAGE TOOLS PRESETS TO SET BASIC SHAPE THEN FINE TUNE TO DESIRED ALTERNATE WINDOW.

	1	2	3	4	5	6	7	8
CASING <small>REVEALS + EXTENSION/INSERTION TYPE</small>	ON		ON	INTERIOR REVEALS ON	ON		ON	INTERIOR REVEALS ON
FRAME STYLE	SYMBOLIC	SYMBOLIC			SYMBOLIC	SYMBOLIC		
SILLS <small>EXTENSION &amp; INSERTION</small>	ON	ON	ON	ON				
CONSTRUCTION EDGE	DW01	DW02	DW03	DW04	DW05	DW06	DW07	DW08
CONSTRUCTION SILL INSET <small>1/4"</small>	DW01	DW02	DW03	DW04	DW05	DW06	DW07	DW08
CONSTRUCTION REVEAL <small>* MAX INTERIOR REVEAL</small>	DW01	DW02	DW03	DW04	DW05	DW06	DW07	DW08

**Cadimage Tools Presets:**  
Using the Presets we can change the overall look of the Window.  
Select the Browse folder icon and search for your desired Preset.

Fixed Arch Fixed Arch Right Casement Half Round Quarter Round Rising Left Sliding 2 Sliding 3

Double Hung Double Hung 2 Double Hung Picture Ribbon Casement Fwd Casement 2 Fwd

Awning 2 Fwd Awning MultiUnit Casement 2 Triple Sash Double Casement Awning Awning Awning

ARCHICAD MASTER TEMPLATE

- **EXTERIOR AND INTERIOR DOORS**

Doors may be created using either Window Builder or Door Builder. Cadimage Tools suggests creating exterior doors with Window Builder to more easily match the styling of the exterior windows.

For this reason, the Cadimage Tools Door Legend is divided into two sections, one for exterior doors (created with Window Builder) and the other for interior doors (created with Door Builder).

**Cadimage Tools DOOR LEGEND**

INCLUDES: VARIATIONS BASED ON CASING, FRAME STYLE, SILL & INSERTION TYPE

NOTE: EYE DROP ELEMENTS TO PICK UP CASING, FRAME, SILL & CONSTRUCTION TYPES. ONCE PARAMETERS ARE ABSORBED, USE CADIMAGE TOOLS PRESETS TO SET BASIC SHAPE THEN FINE TUNE TO DESIRED ALTERNATE DOOR.

EXTERIOR DOORS ARE CREATED USING CADIMAGE TOOLS WINDOW BUILDER FOR CONSISTENCY WITH EXTERIOR WINDOWS, INTERIOR DOORS USE CADIMAGE TOOLS DOOR BUILDER

	1	2	3	4	5	6	7	8
CASING REVEAL - EXTERIOR/INTERIOR TYPE	EXTERIOR DOORS ARE CREATED WITH WINDOW BUILDER				INTERIOR DOORS ARE CREATED WITH DOOR BUILDER			
FRAME THICKNESS								
SILLS EXTERIOR & INTERIOR								
CONSTRUCTION EDGE								
CONSTRUCTION SILL INSET 1/4"								
CONSTRUCTION REVEAL 1/4" x 1/4" TRACK								

**Cadimage Tools Presets:**  
Using the Presets we can change the overall look of the Door (Window).  
As Presets work on individual components we need to select these separately.  
Choose Setout, Door Leaf & Hardware then select the Design folder icon and search for your desired Preset.

Interior Door, Double Door, Closet Slider, Pocket Slider, Bi-Fold, Commercial, Commercial Hall, Commercial Vent

Door Exterior, Door Panelled, Door Sunburst, Door Offset Pivot, Door Right Sidelight, Door Double Sidelight, Door Double French

Exterior Slider, Exterior Bi-Fold, 6 x Sectional, 4 x Sectional with Glass

ARCHITECT MASTER TEMPLATE

- **RAPID DETAILER**

Rapid Detailer is Hotlinked into a separate Worksheet since the elements are designed to be used at larger scales. To access the Rapid Detailer Legend, use the View set up in the 2D LEGENDS folder.

The view defined with the "ALL" zoom is useful for quickly seeing the overview of all the Rapid Detailer elements. The item set with "NO ZOOM" allows you to jump back and forth between the Detailer Legend and your active Detail window, remembering your zoom position. To complement this option, you may find it useful to check the "Ignore Zoom" checkbox in the View Settings for your active Detail in the Detail Clone Folder.

## AMT / CADIMAGE WORK ENVIRONMENT

MasterTemplate does not require any special configuration of your Work Environment, however we recommend certain settings for optimum usage. You may adjust the Work Environment (WE) manually at any time using the Options menu > Work Environment submenu. The MasterTemplate Manual along with Release Notes for each revision of AMT provide guidance on which settings you may find useful to change.

In AMT 13, in response to numerous requests, we supply an AMT Work Environment profile in the standard AMT 13 download. This sets up a few extra keyboard shortcuts, and tweaks some other settings.

In general, to import a WE, open the Options menu > WE dialog, and choose Work Environment Profiles (the top-most item). Click the Import... button and navigate and select the main AMT folder, and ArchiCAD will search and find the AMT Work Environment Profile.

**TIP:** The Import Scheme dialog will attempt to look in all subfolders within a particular location for eligible files. If when you open the dialog, the path is set to a folder that has a large number of subfolders and files (e.g. My Documents), it may take a while before it displays the results, and may be unresponsive when you click the Browse... button. You may interrupt it by hitting the Backspace or Delete key on your keyboard, allowing you to use the Browse button without waiting for it to finish its current search.

To supplement the standard AMT Work Environment Profile, with the Cadimage Legends we supply a special Tool Scheme for use with Cadimage Tools. In the Work Environment dialog box, select Tool Schemes, then use the Import... button and navigate to the AMT CADIMAGE Work Environment folder (supplied as part of the Cadimage Legends download). Select the AMT-Cadimage Tools 13 scheme and click Import. For more info on suggested settings for the Tools, please read the Cadimage Tools PDF document supplied within that same folder, or any later version available through the Cadimage Tools website.

For more information on manipulating Work Environment Profiles and the various Schemes that are subcomponents, please consult the ArchiCAD 13 Reference Manual.

## SUPPORT

Support for the Cadimage Legends is provided to AMT licensees by Bobrow Consulting Group. BCG will answer questions via email to [template@bobrow.com](mailto:template@bobrow.com) or on the MasterTemplate Support Forum ([http://www.archicadtemplate.com/?page\\_id=310](http://www.archicadtemplate.com/?page_id=310)) without charge.

BCG is also available on a consulting basis to answer questions by phone or Skype, using internet-based screen-sharing technology provided by GoToMeeting. BCG can provide training on any level of ArchiCAD usage, guidance on Best Practices, as well as resolution of project or office-specific challenges including custom GDL programming.

Cadimage Tools provides support for the Tools themselves through their website (<http://cadimagetools.com/>) and via email to [support@cadimagetools.com](mailto:support@cadimagetools.com). Please send any bug reports or feature requests to [support@cadimagetools.com](mailto:support@cadimagetools.com). They periodically revise the Tools; you may check for and download minor updates through their website portal.